

SimManager

Simulation process and data management

SimManager is a unique Simulation Process and Data Management (SPDM) system that manages all aspects of CAE simulation. It is focused on meeting the sophisticated data management and processing needs specific to the simulation community. Our customers appreciate our deep understanding of CAE issues and how insights gained from experiences can be captured using SimManager to help them achieve higher efficiency. MSC Software provides a complete solution that brings together people, process, and technology to streamline simulation operations.

SimManager is a web-based simulation data and process management system that manages all simulation data and processes from project initiation through final report generation. Using SimManager, simulation operations become more productive and effective, reducing the cost and time it takes to bring better products to market. Effective implementation also helps meet the required certification requirements where needed, and storage and recovery of data when needed in a secure manner.

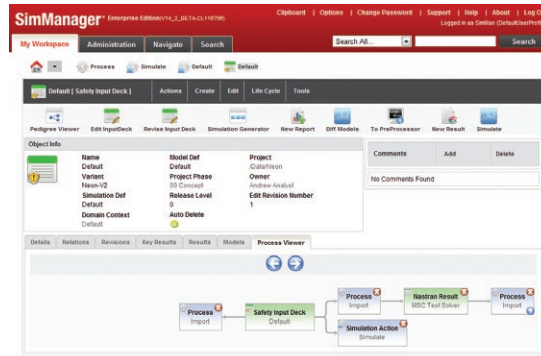
Competitive advantages that scale from a small workgroup to company-wide use include:

- Increased productivity
- Improved quality
- Standardization and establishment of best practices
- Effective collaboration
- Integrated teamwork
- Shorter product development times
- Accelerated process and product innovation
- Data traceability



Process management and automation

- Automation reduces manual execution of intensive, repetitive simulation tasks and processes
- Work request and workflow notification keep projects on track and enable management oversight
- Dashboards enable quick evaluation of studies and scenarios relative to design targets
- Built-in job queue interface optimizes execution of simulation processes and solver runs
- Simulation processes, input and output are documented via Audit Trail
- Open support of tools and applications, including MSC, 3rd party, and in-house applications
- Leverages existing hardware and software infrastructure
- Web-based configuration enables fast deployment



Enterprise integration

- Integrated access to SimManager from MSC applications
- Web-browser access to 3rd party simulation applications and other popular engineering tools
- PDM integration using PROSTEP OpenPDM technology
- Integration with Requirements Management systems
- Fully compatible with job queuing and submission systems including MSC Analysis Manager, LSF, Sun Grid Engine, and PBS Pro
- Test Data integration and comparison